

# Fisheries Management Overview

---

Jessica Choi - [jejichoi@ucsc.edu](mailto:jejichoi@ucsc.edu)

[jessica.choi@noaa.gov](mailto:jessica.choi@noaa.gov)

Bay Area Sportfishers Club, Vice President

# Species ID Resources

---

RecFIN Rockfish ID <https://www.recfm.org/resources/fishid/>

Rockfish ID Tips <https://myodfw.com/articles/rockfish-identification-tips>

Cali Beach fishing guide

<https://nrm.dfg.ca.gov/FileHandler.ashx?DocumentID=35252&inline>

Surf perch species <https://nrm.dfg.ca.gov/FileHandler.ashx?DocumentID=36617&inline>

Marine Bait fish <https://nrm.dfg.ca.gov/FileHandler.ashx?DocumentID=36324&inline>

# 3 Principal Managers

---

- The Federal Government
  - regional councils: such as Pacific Fishery Management Council (PFMC), to develop fishery management plans (FMPs) and recommend fishing regulations to states and the National Marine Fisheries Service (NMFS). PFMC receives technical advice from science advisory teams that are staffed by NMFS and state fishery agency biologists. PFMC makes recommendations to the National Oceanic and Atmospheric Administration (NOAA).
- The Fish and Game Commission
  - Jurisdiction over state waters (0-3 nautical miles). Recommendations from California Department of Fish and Game
- California State Legislature
  - Department of Fish and Game responsible for enforcement, management plans, state recommendations.

Fishery	Management Jurisdiction
Dungeness Crab	Commercial: Legislature Recreational: Commission
Groundfish	PFMC
Nearshore Finfish	Commission and PFMC
CA Halibut	Criteria for Gill and trammel nets: Legislature Issuance of gill and trammel nets: Commission
White Seabass	Commission
Pacific Salmon	Commission and PFMC
Coastal Pelagics	PFMC
CA Market Squid	Commission
CA Spiny Lobster	Commission
Rock Crab	Commission

Credit: Ocean Protection Council

# Rockfish *Sebastes* Life history & Age and growth

---



# Field Research

---



Data collection means:

- Fishery dependent
- Fishery independent
- Hook and Line
- Midwater/bottom trawl



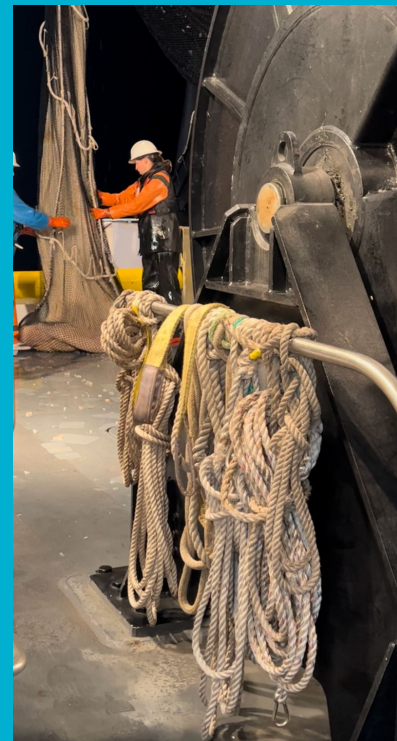
# Field Research

- Floy tag: report lat/long/length for reward
- Collect data





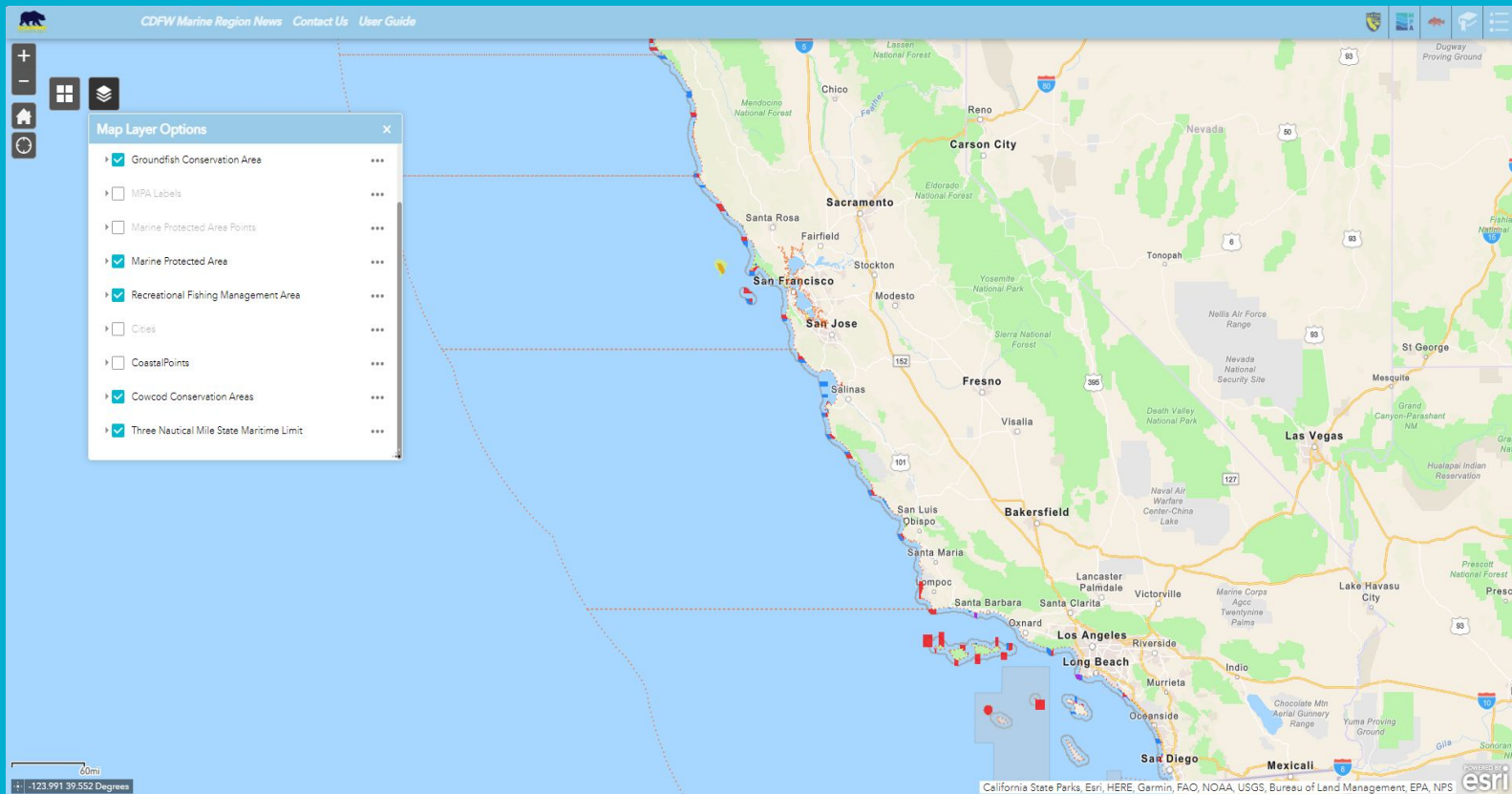
# Field Research





# Marine Region Map – CDFW

Marine  
Region Map  
<https://cdfw.maps.arcgis.com/apps/webappviewer/index.html?id=c00c82e1f32a49e99c747e2411e3439e>



# 2023 Regulations – resources

---

Fishing regulations <https://wildlife.ca.gov/Regulations>

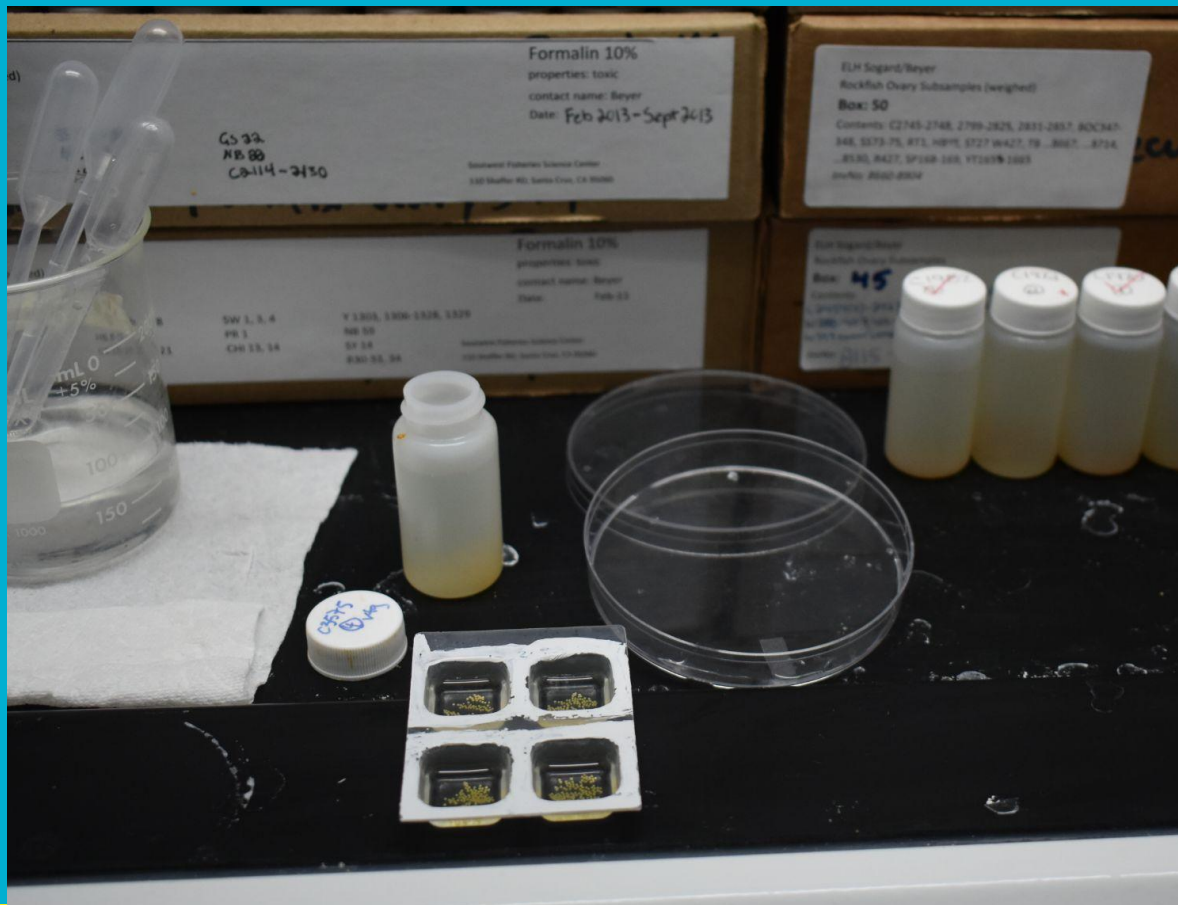
Fish and shellfish ID

<https://wildlife.ca.gov/Fishing/Ocean/Fish-ID/Sportfish/Flatfishes#pachalibut>

# Sampling

## ‘Fecundity’ studies

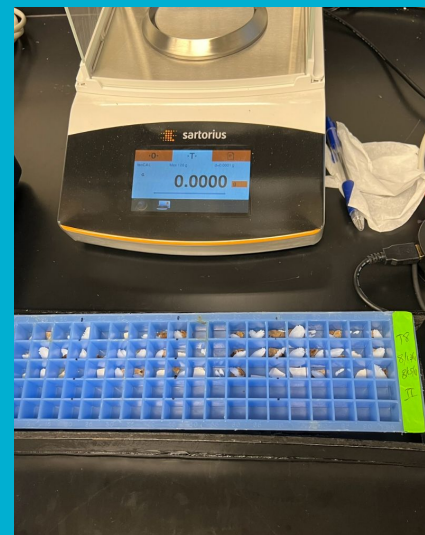
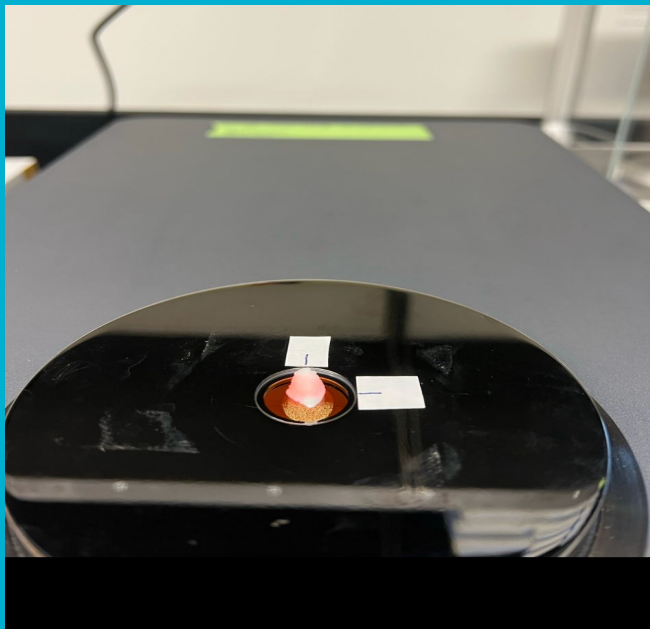
- Maternal outputs
- Seasonal variability
- Estimate of future populations

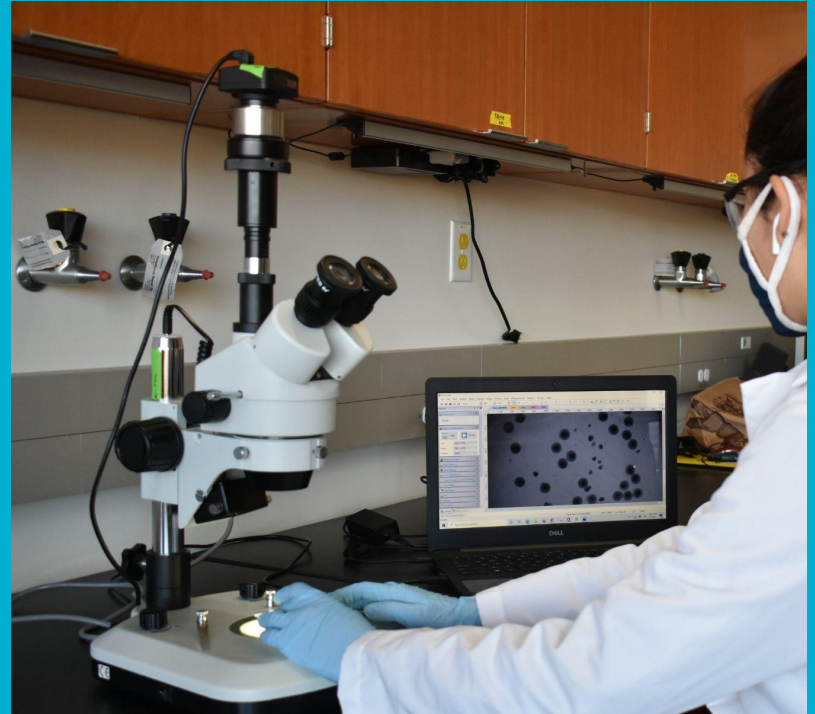
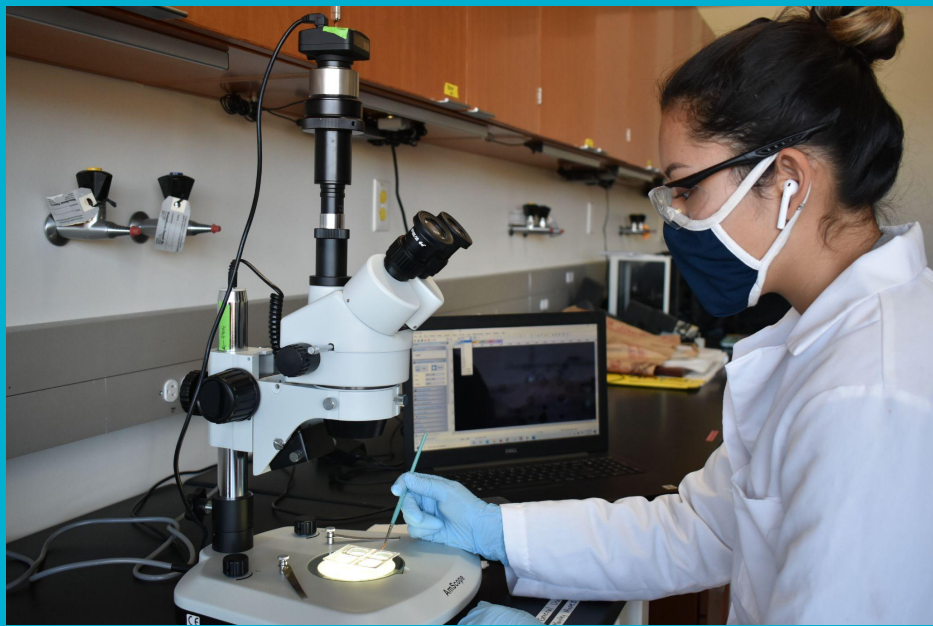


# Sampling

---

- Fecundity
- Otoliths
- Fin clips







# Ways to get involved

---

[Pacific Fishery Council Meetings/Public Comments](#)

[Coastal Conservation Association](#)

[Bay Area Sportfishers Club](#)

[MPA Research Volunteering \(CCFRP\)](#)

THANK YOU!